



# Dr. Matteo Bertelli's™

## DIGESTIVE ENZYMES COMPLEX

### Dietary Supplement with Digestive Enzymes



 **MAGISNAT™**  
The science behind the natural molecules and the Mediterranean diet



# DIGESTIVE ENZYMES COMPLEX

**Dr. Matteo Bertelli's Digestive Enzymes Complex is a Dietary Supplement based on Digestive Enzymes.**



## Supplement Facts

Serving Size: 1 Capsule  
Servings Per Container: 30

	Amount per Serving	% Daily Value*
<b>Enzyme complex from fermented plant</b>	100mg	**
of which Amylase	3000DU	**
of which Protease	6000 HUT	**
of which Glucosamylase	4 AGU	**
of which Lipase	225 FCC FIP	**
of which Cellulase	600 CU	**
of which Lactase	3000 ALU	**
of which Pectinase	14 endo-PGU	**
Bromelain	100mg	**
of which GDU	240	**

\* Percent Daily Values (DV) are based on a 2,000 calorie diet.

\*\* Daily Value not established

DU: dextrinating unit of alpha-amylase.

HUT: hemoglobin unit on the tyrosine base

AGU: aspartylglucosamidase unit

FCC FIP: fungal lipase unit

CU: cellulase unit

ALU: acid lactase unit

endo-PGU: endo polygalacturonidase unit

## QUALITY AND SAFETY

We analyze **each individual batch**, ensuring the **highest accuracy and safety** of our dietary supplements. The analyses are published on our website, [www.magisnat.com](http://www.magisnat.com), and search for the **batch number corresponding to the one you purchased** to view them.

**What do we check for each production batch?**

- Microbiological Analysis
- Absence of heavy metals
- Absence of pesticides and aflatoxins
- Gluten-free and lactose-free
- Absence of the eight food allergens

This dietary supplement has been manufactured in Italy, **under certified cGMP processes**. **US expert consultants provide a dossier for each production batch.**



# DIGESTIVE ENZYMES

---

## COMPLEX

### PROPERTIES



**Support for Protein, Carbohydrate, Fat, Fiber and Dairy Digestion\***: The incorporation of digestive enzymes helps enhance comfort during and after meals, optimizing the efficiency of the digestive system.\*



**Microbiota Regulator\***: Digestive enzymes contribute to the stabilization of the microbiota, thereby improving digestion and promoting a healthy digestive system.\*



**Helps Alleviate Digestive Discomfort\***: Digestive enzymes serve as a valuable ally in providing relief from digestive disturbances, ultimately enhancing digestive well-being.\*

---

## OUR APPROACH TO PERSONALIZED

### DIETARY INTEGRATION

The data from omics tests allows us to understand the real needs by studying the body's key metabolic mechanisms. Our dietary supplements are designed to target these critical areas\*, providing targeted support where your body needs it most.



#### **Omics Testing: Discover Your Personalized Report**

Embrace the results of omics tests to discover the secrets of your vulnerabilities and needs.



#### **Selection of the Right Dietary Supplement for You**

Choosing a dietary supplement should not be based only on the claims but must also stem from the personalized information of each individual.



#### **Monitoring for Excellence**

Only through careful monitoring, made possible by omics tests, you can gain the maximum benefit from the supplements.



#### **Science at the Core**

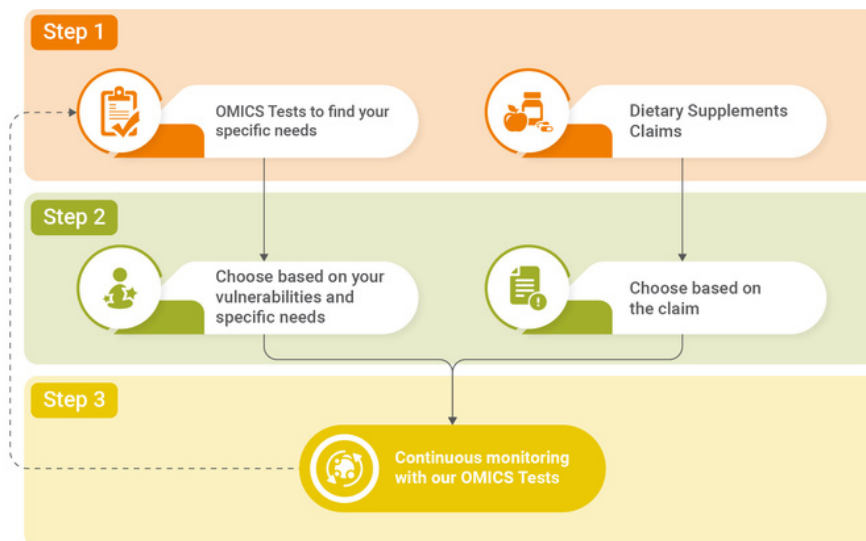
Every formulation is the result of the scientific research conducted by MAGISNAT at the Atlanta Tech Park.



# DIGESTIVE ENZYMES COMPLEX

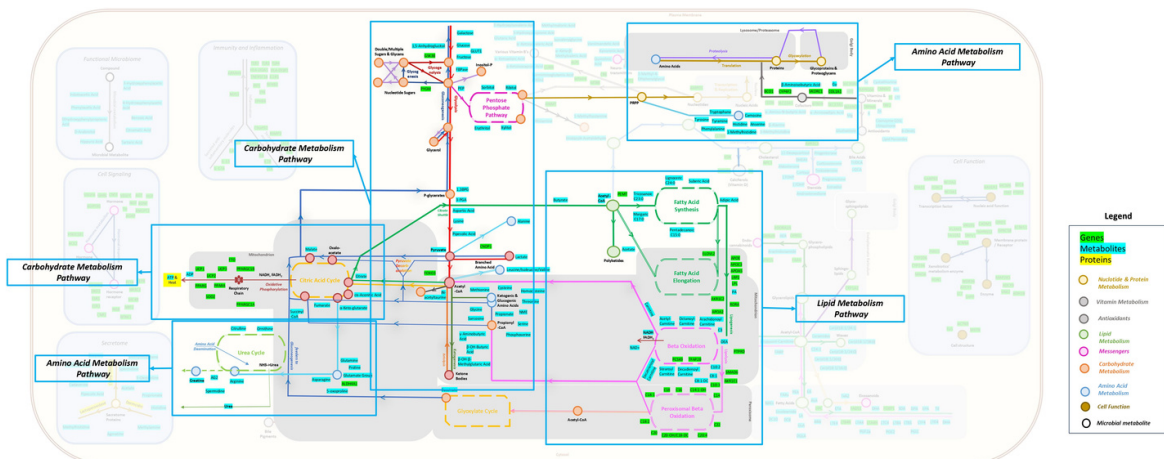
## INTEGRATED APPROACH: OMICS PATHWAY ANALYSIS AND DIETARY SUPPLEMENTS

As first step, MAGISNAT provides OMICS Tests that allow you to identify your specific needs. Moving on to step two, MAGISNAT offers a diverse range of dietary supplements designed to support those specific needs.\* Furthermore, as the third step, MAGISNAT, utilizing OMICS Tests, enables you to continually monitor your metabolism, empowering you to make informed decisions and choose the most suitable dietary supplement for your evolving requirements.



Using advanced omics techniques and our 'OMICS Machine,' MAGISNAT examines human metabolic pathways, identifying deficiencies and vulnerabilities through omics tests. This informs personalized nutritional supplementation based on individual molecular profiles, laying the groundwork for crafting personalized nutritional plans.

### Where it acts?\*



\*Dietary supplements do not possess any therapeutic or preventive properties. These statements have not been evaluated by the Food and Drug Administration. This dietary supplement is not intended to diagnose, treat, cure or prevent any disease.



# DIGESTIVE ENZYMES COMPLEX

## WARNINGS

- This dietary supplement is not to be intended as a substitute for a varied diet and must be used as part of a healthy lifestyle.
- Keep the product out of reach from children under 18 years of age. Do not exceed the recommended daily dose.
- For the usage of the product during pregnancy and during breastfeeding or during taking medication it is recommended to seek the advice of a doctor.
- Do not take in cases of known or suspected hypersensitivity or allergy to one or more of its components.
- Do not use if the package is not intact and/or after the expiration date. The expiration date refers to the product correctly stored and in unopened packaging.

## STORAGE

- Store at room temperature in a cool and dry place, away from direct light and heat sources. Maximum storage temperature 104°F.
- Do not use if the package is not intact and/or after the expiration date.
- Expiration date refers to a product properly stored and in unopened package.

## DIRECTIONS

- The recommended dose of Dr. Matteo Bertelli's Digestive Enzymes Complex is 1 capsule a day with a meal.
- Maximum dosage: 1 capsule a day in total.
- When using this product, do not exceed the recommended dose.